

Pressurized Ultrafiltration Specifically for Small Systems

UF Module Model IWT-275 IWT UF SERIES PACKAGED PLANTS

Description and Use

Innovative Water Technologies, Inc. has teamed with a pioneer of membrane technology, GE leverages decades of research, development, and operational experience in developing the most advanced pressurized ultrafiltration technology in the market, specifically designed for small drinking water systems. The IWT-275 systems are proven to consistently outperform conventional filtration technology while meeting or exceeding regulatory requirements, regardless of source water quality.

Typical Applications

The IWT UF SERIES PACKAGED PLANTS are Versatile and reliable, featuring the pressurized IWT-275 UF Module, it is ideally suited for use in numerous applications including drinking water treatment, tertiary filtration, RO pre-treatment for brackish water, seawater. Compared to granular filter media, IWT-275 membranes produce superior water quality and are virtually unaffected by variable raw water quality - all at a cost comparable to conventional filtration technology.

General Properties

- 0.02 µm nominal pore diameter - for optimal removal of particulates, bacteria and viruses
- PVDF hollow fiber membrane - provides high mechanical strength and chemical resistance
- Outside-In filtration - provides uniform flow distribution and high solids tolerance



Storage and Handling

Modules may be stored in the original factory packaging for up to 1 year prior to installation. Modules must be stored between 5°C and 35°C (41°F to 95°F). Do not expose the membrane module to direct sunlight (UV light).

Safety Precautions

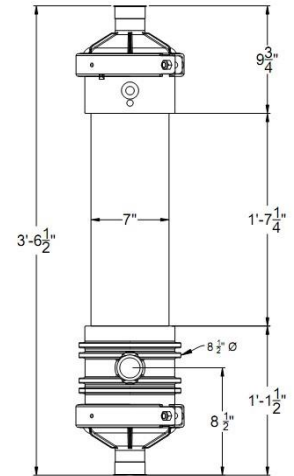
A Material Safety Data Sheet containing information about this product is available on request.

Product Specifications

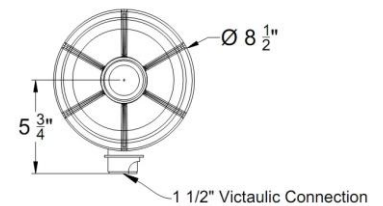
Model	IWT-275
Nominal membrane surface area	25.5 m ² (275 ft ²)
Max shipping weight*	18 kg (35 lb)
Lifting weight**	18 kg (35 lb)
Membrane material	PVDF
Nominal pore size	0.02 micron
Nominal fiber diameter	OD: 1.1 mm, ID: 0.66 mm
Flow path	Outside-In
Housing material	PVC housing with Noryl caps

* Packaged

** Varies with solids accumulation



All lengths in inches



Module Dimensions		
Connections: Permeate/Feed/Reject	Height	Pipe diameter
Victaulic/Victaulic/Victaulic*	1074.4 mm (42.3 in)	180 mm (7.1 in)

Operating Parameters

Performance	Flow range	5-10 gpm
Operating conditions	Max shell inlet pressure	379 kPa (55 psi)
	TMP range	0-276 kPa (0-40 psi)
	Max temperature	40°C (104°F)
	Operating pH	5.0-10.0
	Max air scour flow	5.1 m ³ /h (3 dcfm)
	Max backwash flow	1.8 m ³ /hr (8 gpm)
Cleaning	Cleaning pH range	2.0-12.0
	Max chlorine concentration	1,000 mg/L (as NaOCl)*

*NOTE: Higher concentrations are possible depending on feedwater and pH.

IWT UF SERIES Packaged Plants

Performance	Flow range	5,000 – 250,000 gpd
	Efficiency	92 -98%
Custom designed to your facility and flow requirements		Customized for small systems: Individual module backwash, CIP, MIT and maintenance capabilities
Custom packaged plants can include pumps, controls, chemical addition, disinfection, strainers, pre-filters, auto on-line analyzers, etc...		Skids, trailers, etc...